

# Quick Start Guide of NVR

## 1. Notes

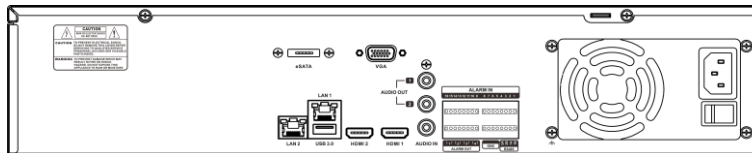
Before using the device, please read the following guide carefully to avoid human injury, device damage, data loss, decrease of the device performance, and other unexpected damages.

## 2. Front Panel



The front panel is for reference only.

## 3. Rear Panel



The front panel is for reference only.

## 4. HDD Installation

Please turn off the power and then start the installation of HDD. The pictures of the installation are only for reference.



Remove the cover



Fix the HDD



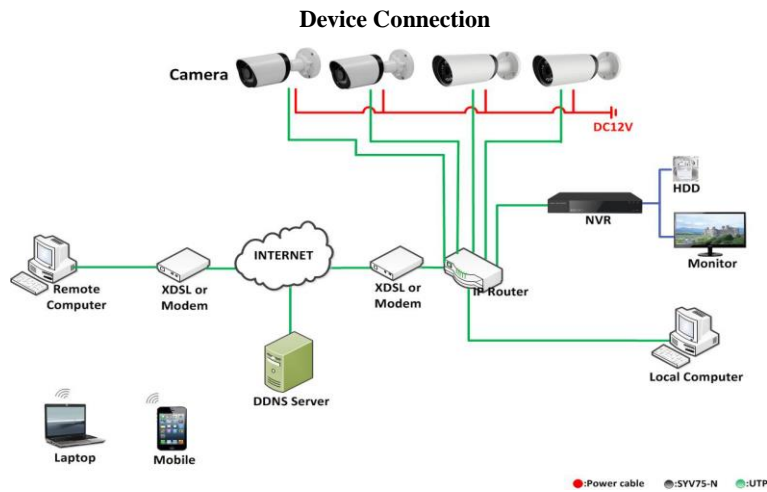
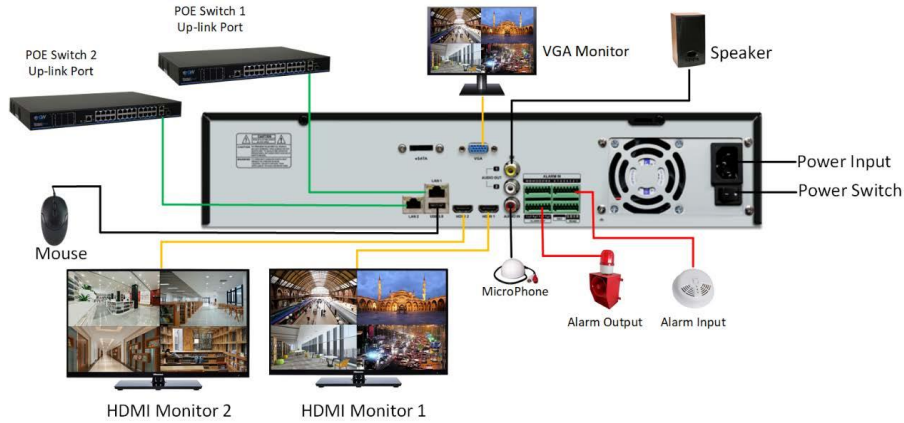
Connect the power and data cables



Install the cover and screws

## 5. Device and Network Connection

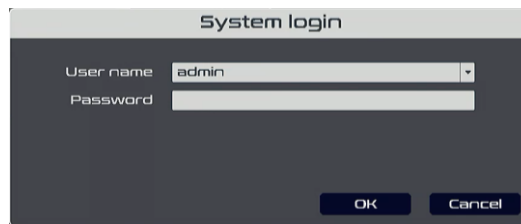
We recommend you connect NVR with other monitoring devices follow pictures below. Please give power to IP cameras、NVR and other device separately.



Network Connection

## 6. Start up and Log in

Make sure the cables of Hard Disk and network port are well connected then plug in the power and turn on the power switch on the back panel of NVR. Power supply indicator blinking indicates the video recorder is on work, and then you will hear a beep. When operate a username and password is needed, the default username is **“admin”** and the password is **“12345”**, shown as below:



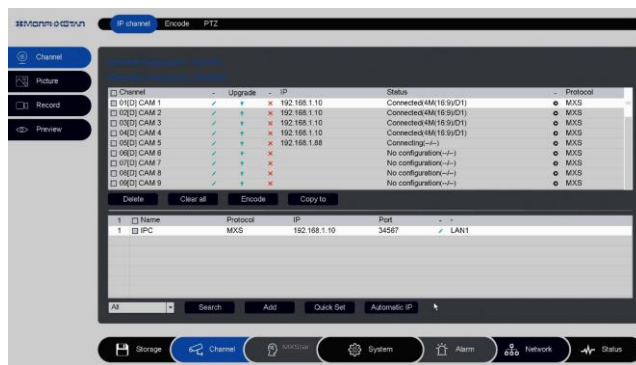
## 7. Network setting

Please “Right Click” -> “Main menu” -> “IP address” to open the network setting interface, here you can change the IP address and DNS, shown as picture below. Please be noted that the IP address of NVR should be at the same network segment with Router.



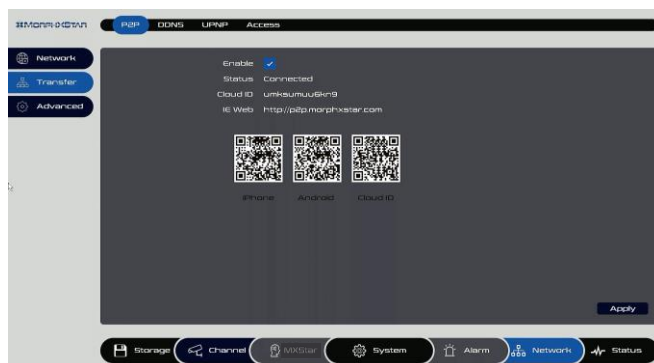
## 8. Add IP cameras

Right click on Preview then click "Main menu" -> "Channel Setting" to open the interface shown as below:



## 9. P2P

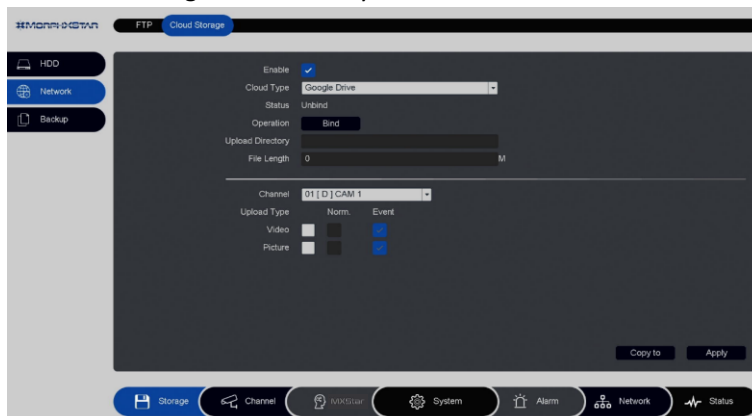
Click on "Setting -> Network -> P2P" into the graphical interface. This page shows the iPhone or Android APP download links, and the cloud ID Identification code. Enable the option and it will show the status if connecting to the server successfully. Try to access the IE Web: <http://p2p.morphxstar.com> to login the web server and manage the device. You may also download the APP by scanning the QR-code.



## 10. Cloud Storage

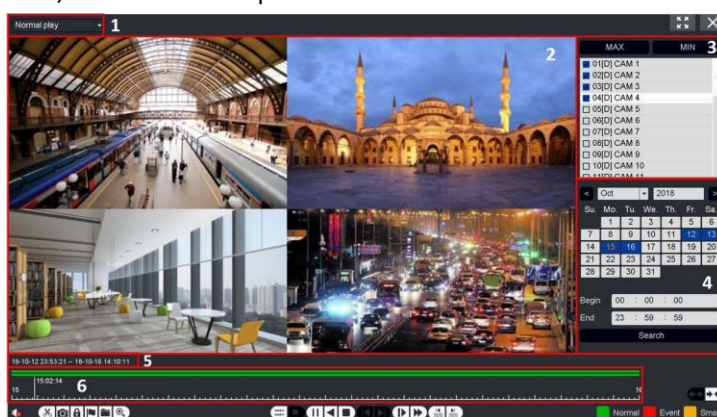
Click on the "Setting -> Network -> Cloud Storage" into the graphical interface. Two types of cloud storage are supported: Google Drive and Drop box. Enable the function and choose the one you would like to use and start the binding procedure. You may upload videos

and pictures to the Cloud Storage automatically.



## 11. Playback

Right click the mouse and enter [Record Playback], select the playback mode on the Top-left of the screen. It supports 5 play modes such as: Normal play/ event play/ label play/ Time division play/ Normal play(Picture), select channels and date, then click ▶ to play the records. Control bar is used to play/pause, speed up/slow down, backward/stop, etc. You may clip the record, set a label or lock the file, for more details please refer the User Manual.



## 12. Backup

Right click the mouse, enter [Main Menu] and choose the option [Backup]. You can backup videos and pictures to extend USB driver. Two kinds of file format are available: DAV&AVI. Then detect/select the memory device and start the backup.

